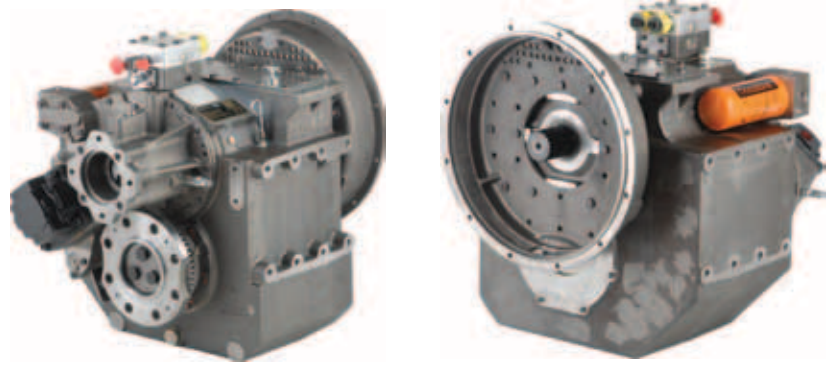


MAXIMUM 1104 kW (1480 HP) @ 2300 RPM [PLEASURE CRAFT DUTY]**STANDARD EQUIPMENT**

Vertical offset, aluminum housing
 Electric GP-valve with manual override
 EC050 profile module – interface for engagement signals
 Mounted oil cooler for raw water cooling
 Oil strainer and oil filter

**OPTIONS**

Input hub for freestanding installation
 SAE J617 input housing no. 1 or no. 0
 Flexible coupling for 14" or 18" flywheel (SAE J620 size 355 or 460)
 EC050 E-Troll module – interface for engagement and trolling signals
 Mechanical control valve
 Companion flange/bolts set
 Special companion flange/bolts set for shaft brake application
 Monitoring devices to customer's specification
 Output shaft driven trailing pump
 Mounted oil cooler for fresh water cooling
 Mounting brackets
 Live PTO
 SAE J744 size 127-2/4, 32-4 (SAE "C", 2/4-bolt) – max. 592 Nm
 SAE J744 size 127-2/4, 38-4 (SAE "C-C", 2/4-bolt) – max. 1187 Nm
 Hydraulic clutchable pump mount PTO
 SAE J744 size 127-2/4, 32-4 (SAE "C", 2/4-bolt) – max. 592 Nm
 SAE J744 size 127-2/4, 38-4 (SAE "C-C", 2/4-bolt) – max. 1187 Nm
 Weight (dry weight with standard equipment): 410 kg

Contact Twin Disc for Survey Society Approvals and Classifications.
 Specifications subject to change without prior notice in the interest of continual product improvement.

INPUT RATINGS – KILOWATTS (kW) (HORSEPOWER [HP])*

MGX-5204 SC	Reduction Ratios :1	Pleasure Craft Duty @ 2300 RPM	Light Duty @ 2300 RPM	Intermediate Duty @ 2100 RPM	Medium Duty @ 1800 RPM	Continuous Duty @ 1800 RPM
	1.17, 1.33 1.53, 1.76 2.03, 2.48 2.92	1104 kW (1480 hp)	979 kW (1313 hp)	858 kW (1151 hp)	716 kW (960 hp)	716 kW (960 hp)
3.48	1081 kW (1450 hp)	837 kW (1122 hp)	720 kW (966 hp)	600 kW (805 hp)	600 kW (805 hp)	

* Input speed limits: min. 450 rpm/max. 2750 rpm for ratios 1.33-3.48, 2500 rpm for 1.17 ratio.
 Ratings shown are for use with standard right hand rotation engines.

SERVICE CLASSIFICATION DEFINITIONS

Pleasure Craft [PC]: Up to 500 hours/year, low load factor usage planing hull vessels where typical full engine throttle operation is less than 10% of total time. The balance of operation at 80% of full engine throttle or less. Marine transmissions for use in long range pleasure cruisers, sportfish charter boats/patrol boats do not qualify for Pleasure Craft Service.

Note: Some revenue producing applications such as Planing Hull Bristol Bay Gillnetter do qualify under Pleasure Craft rating definition.

Light Duty [LD]: Relatively low hour usage (less than 1500 hours per year) where full throttle operation is 2 hours out of 12.

Typical applications include planing hull vessels such as fire boats, sportfish charter boats, and patrol/custom boats. This rating is also applicable to some bow and stern thruster applications.

Intermediate Duty [ID]: Hour usage of up to 2000 hours/year (for models MG-5114 Series and smaller) and up to 3000 hours/year (for models larger than MG-5114 Series) with 50% of the operating time at full engine rating.

Typical applications include planing hull vessels such as ferries, fishing boats, some crew boats, and some displacement hull yachts as well as some bow and stern thruster applications.

Medium Duty [MD]: Hour usage of up to 4000 hours/year with up to 80% of operating time at full engine power. This duty classification is for usage where some variations in engine speed/power occur as part of normal vessel operation.

Typical vessels include mid-water trawlers, crew/supply boats, ferries, and some inland water tow boats.

Continuous Duty [CD]: For use in continuous operation with little or no variation in engine speed/power setting.

Typical vessels include fishing trawlers, tow/tug boats and ocean going vessels.

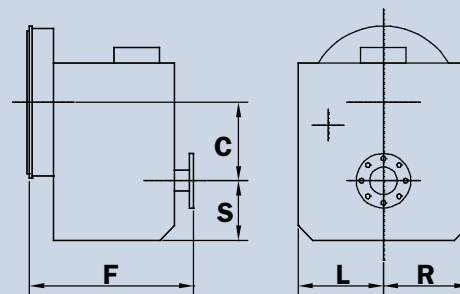
Important Notice: Torsional Vibration: Disregarding propulsion system torsional compatibility could cause damage to components in the drive train resulting in loss of mobility. At minimum, system incompatibility could result in gear clatter at low speeds.

The responsibility for ensuring that the torsional compatibility of the propulsion system is satisfactory rests with the assembler of the drive and driven equipment.

Torsional vibration analysis can be made by the engine builder, marine survey societies, independent consultants and others. Twin Disc is prepared to assist in finding solutions to potential torsional problems that relate to the marine transmission.

Twin Disc, Incorporated reminds users of these products that their safe operation depends on use in compliance with engineering information provided in this bulletin. Users are also reminded that safe operation depends on proper installation, operation and routine maintenance and inspection under prevailing conditions. It is the responsibility of the user (and not Twin Disc, Incorporated) to provide and install guards or safety devices which may be required by recognized safety standards or by the Occupational Safety and Health Act of 1970 and its subsequent provision.

MGX-5204 SC



C	247.7 mm (9.75 in)
S	222.3 mm (8.75 in)
F	594.5 mm (23.41 in)
L	374.7 mm (14.75 in)
R	266.7 mm (10.50 in)

